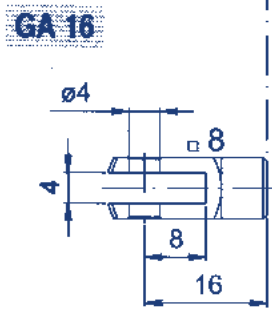
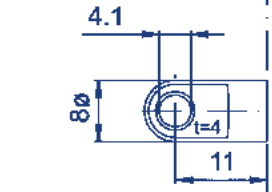
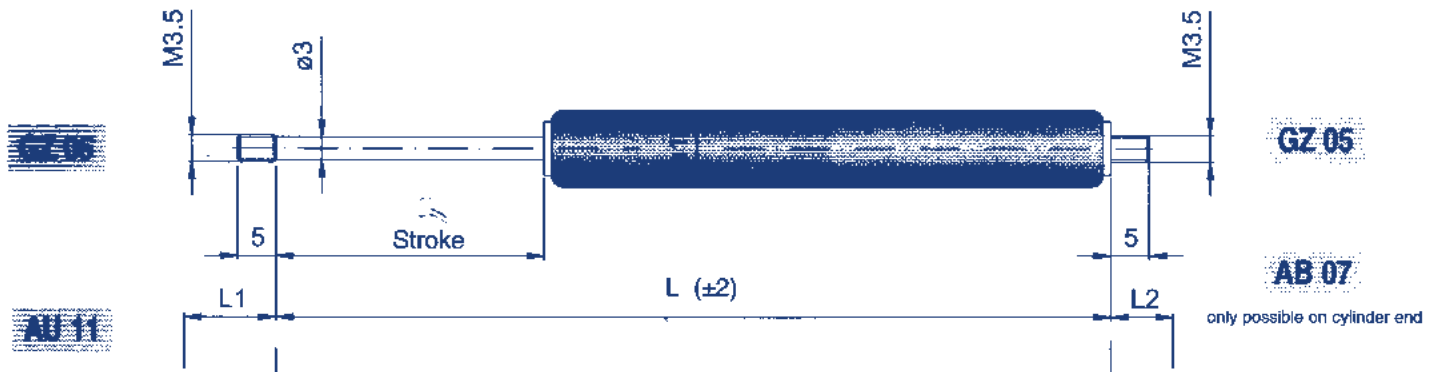


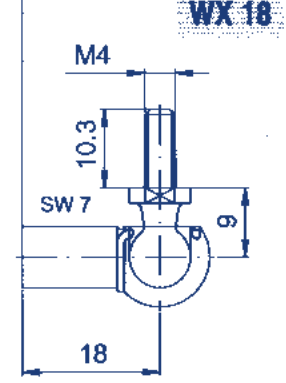
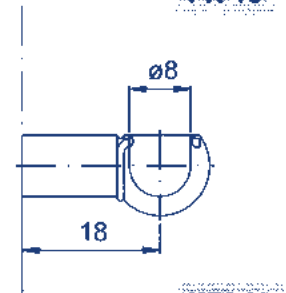
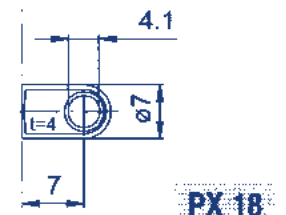


Gas spring G 3-10

Extension force F1	5 - 100 Newton
Progression	20 %
Piston rod	Ø 3 mm stainless steel
Cylinder	Ø 10 mm steel black spray coated
Fittings	Steel zinc plated



Standard Strokes [mm]	10, 20, 30, 40, 50, 70, 80 *Special strokes available upon request
Base Length L	= 2 x Stroke + 32mm
Overall Extended Length	= L + L1 + L2
Extras	Code 5 (see pages 4 & 28)



Order Code example
G03 10 0050 1 0150 AU11 AB07 50N (see page 4)